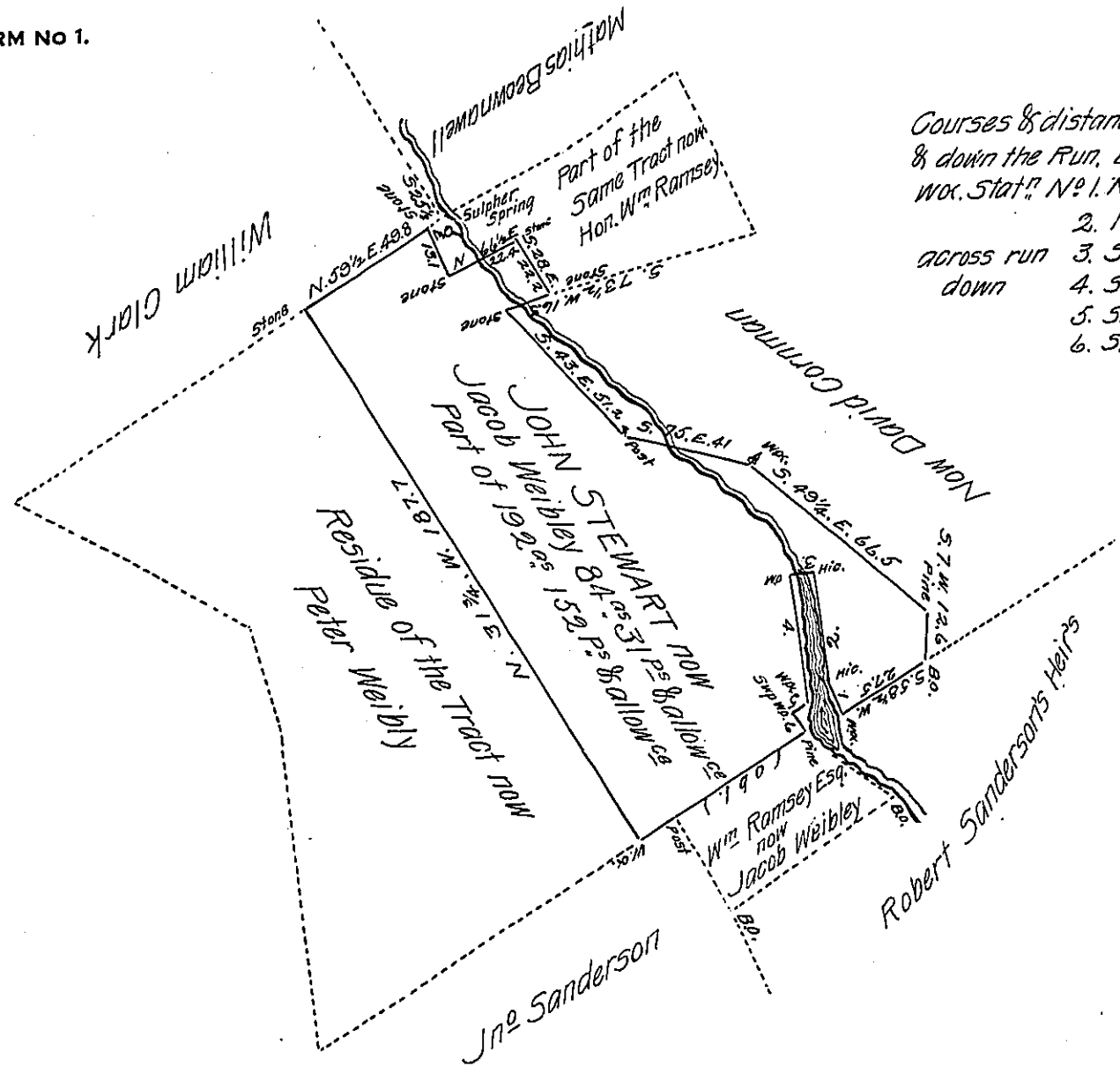


FORM NO 1.



Courses & distances up, Cross,  
& down the Run, Beginning at the  
Wax Stat<sup>n</sup> N<sup>o</sup> 1. N, 30° W. 10.5 p<sup>s</sup> Hig<sup>y</sup>  
2. N. 8° W. 32. p<sup>s</sup> Hig<sup>y</sup>  
across run 3. S. 75 1/2° W. 2.7 . W<sup>o</sup>  
down 4. S. 4 1/2° E. 39.5. W<sup>o</sup>  
5. S. 61. W. 56. Swamp W<sup>o</sup>  
6. S. 40. E. 4. Pine

A Draught of a Tract or parcel of Land Situated in North Middleton Township, Cum-  
berland County, Containing 84<sup>ac</sup> 31<sup>ps</sup> & allow<sup>ce</sup> of six pr. Ct for roads &c. being a  
part of 192<sup>ac</sup> 152<sup>ps</sup> & allow<sup>ce</sup> originally Surveyed on a Warrant granted to John  
Stewart dated the 14<sup>th</sup> Sept<sup>r</sup> 1796. this part resurveyed the 18<sup>th</sup> day of June 1828  
for Jacob Weibley in order to make out a separate return for Patenting.

P<sup>r</sup> Jno<sup>r</sup> Harper D.S.

To Gabriel Hiester Esq<sup>r</sup>  
Surveyor Gen<sup>l</sup>

IN TESTIMONY that the above is a copy of the original remaining on file in  
the Department of Internal Affairs of Pennsylvania, made  
conformably to an Act of Assembly approved the 16th day of  
February, 1833, I have hereunto set my Hand and caused  
the Seal of said Department to be affixed at Harrisburg,  
this eighteenth day of January 1907.

*Loaen P. Brown*  
Secretary of Internal Affairs.